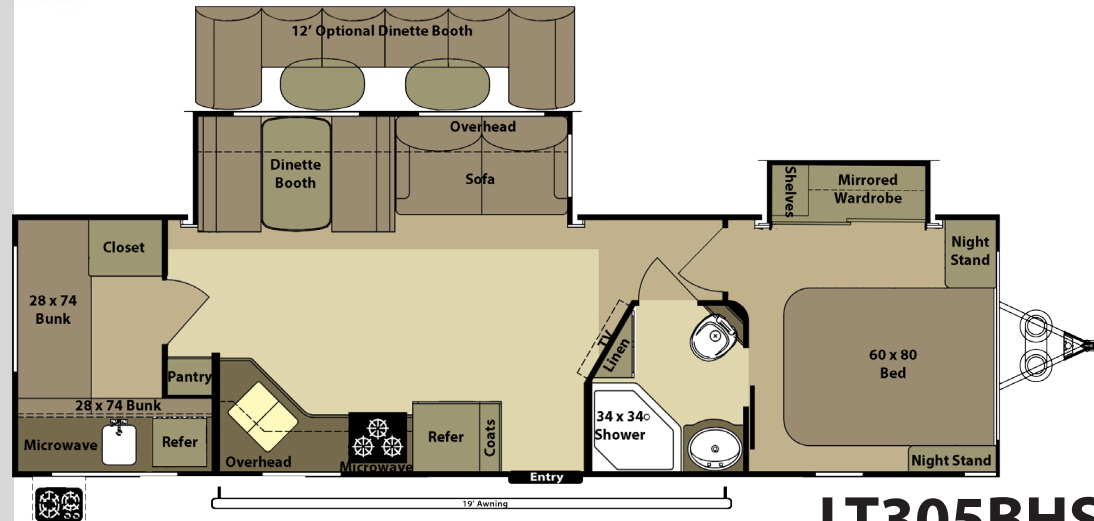


Light

By *Open Range*



LT305BHS

- 2 Year Limited Transferable Warranty
- 100" Exterior Width
- PVC Roof
- SymaLite Exterior Sidewall Substrate
- Gel Coated Fiberglass Walls
- 42" Deep Main Slide
- 4 Point Compression NORCO Slide Out System
- Less Weight / More Room
- 13,500 BTU Dometic A/C w/"Quick Cool" Feature
- R-38 Ceiling & R-38 Flooring Insulation
- Nitrogen Filled Radial Tires
- LED Taillights
- "Maxx Air" Vent Cover
- 15" Aluminum Wheels
- Front and Rear Stabilizer Jacks
- Exterior Utility Center w/Black Tank Flush
- Equa Flex Suspension
- Full View Vented Entrance Door
- Wrapped Wood Slide Out Fascia
- Massive Windows 72" x 34"
- Concealed Hinges
- "Comfort Cloud" Mattress
- Full Stand Up Bedroom
- LED Lighting in Ceiling
- Crown Molding
- 50 Amp Service

Model Number/ Square Feet	305
GVWR	9595
UVW	6805
Hitch Weight	795
Axle Weight	6010
GAWR - All Axles	8800
Gross NCC	2790
Ext. Length	34'4"
Ext. Height (with A/C on roof)	125"
Ext. Width	100"
Water Heater	6 Gal Gas/Elec
Fresh Water (Gal)	50
Gray Water (Gal)	62
Waste (Gal)	31
LP Gas (Lbs)	40
Furnace (BTUs)	30,000
Tire Size	15"
Awning Size	19'

** Features subject to change without notice.

Rev: 04/24/2012