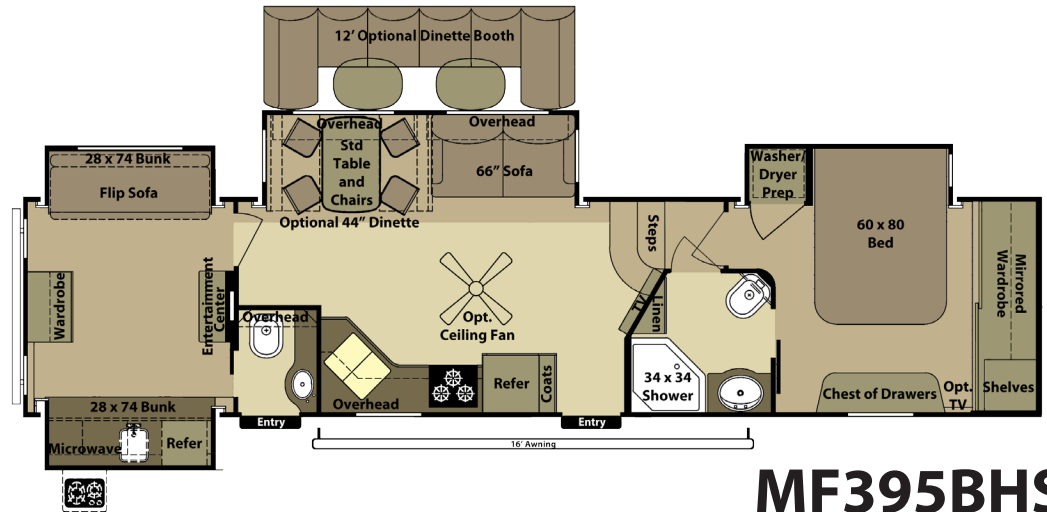


Mesa Ridge



by OPEN RANGE



MF395BHS

2 Year Limited Transferable Warranty

100" Exterior Width

PVC Roof

SymaLite Exterior Sidewall Substrate

Gel Coated Fiberglass Walls

42" Deep Main Slide

4 Point Compression NORCO Slide Out System

Less Weight / More Room

15,000 BTU Dometic A/C w/"Quick Cool" Feature

R-38 Ceiling & R-38 Flooring Insulation

Exterior Utility Center w/ Black Tank Flush

EZ Flex Suspension

Nitrogen Filled Radial Tires

LED Taillights

4 point Leveling System

JT Strong Arms

10 Gallon Water Heater

Full View Vented Entrance Door

Compression Latch Baggage Doors

Wrapped Wood Slide Out Fascia

Corian® Brand Counter Tops

Pull Out Waste Basket

Pull Out Pantry

Porcelain Toilet w/ Foot Pedal Flush

Concealed Hinges

"Comfort Cloud" Mattress

Deeper Dresser Drawers

8 cu ft Refrigerator

LED Lighting in Ceiling

Crown Molding

50 Amp Service

Model Number/ Square Feet	395
GVWR	16005
UVW	11310
Hitch Weight	2005
Axle Weight	9305
GAWR - All Axles	14000
Gross NCC	4695
Ext. Length	39'4"
Ext. Height (with A/C on roof)	155"
Ext. Width	100"
Water Heater	10 Gal Gas/Elec
Fresh Water (Gal)	85
Gray Water (Gal)	74
Waste (Gal)	74
LP Gas (Lbs)	80
Furnace (BTUs)	40,000
Tire Size	16"
Awning Size	16'

** Features subject to change without notice.

Rev: 04/03/2012